

Phil Clarke

Clarke Design Group

1100 Palm Blvd

Suite 1A

Isle of Palms, SC 29451

June 29, 2023

This report was prepared for Phil Clarke with Clarke Design Group concerning 1 Live Oak Tree at 1307 Middle Street.

After visiting the site, I observed the following:

22-inch Live Oak Tree

1. Previous Branch Failures
2. Multiple V-crotch Unions which indicate included bark and organic matter
3. 50% Unbalanced Canopy
4. Co-dominant Stems



The 22-inch Live Oak Tree has a severe V-crotch union. The parent stems that are approximately equal in diameter and arise from the same location are called co-dominant. These stems are considerably weaker due to stem orientation, weight distribution and included bark.



Included bark is bark that is embedded between the parent stems. This decreases the strength of the attachment. Load, wind direction and leverage weight all contribute to the greater risk of failure of V-crotch unions.



Previous branch failures have resulted in multiple codominant stems in the crown. These are weak attachments with v-crotch unions that also have a greater risk of fail as canopy size increases decay begins at the formation of codominant stems. This combined with the



NURTURE, GROWTH & CARE

improper union of these branches increases the risk of fail. Pruning of codominant stems is not an option as there is no branch bark collar at the base. As a result, a larger column of decay may develop after pruning.

My recommendation is for the removal of the 22-inch Live Oak Tree. Better specimen trees could be planted for a future asset.

Thank you,

P.O. Mead IV

ISA Certified Arborist

SO-7374A

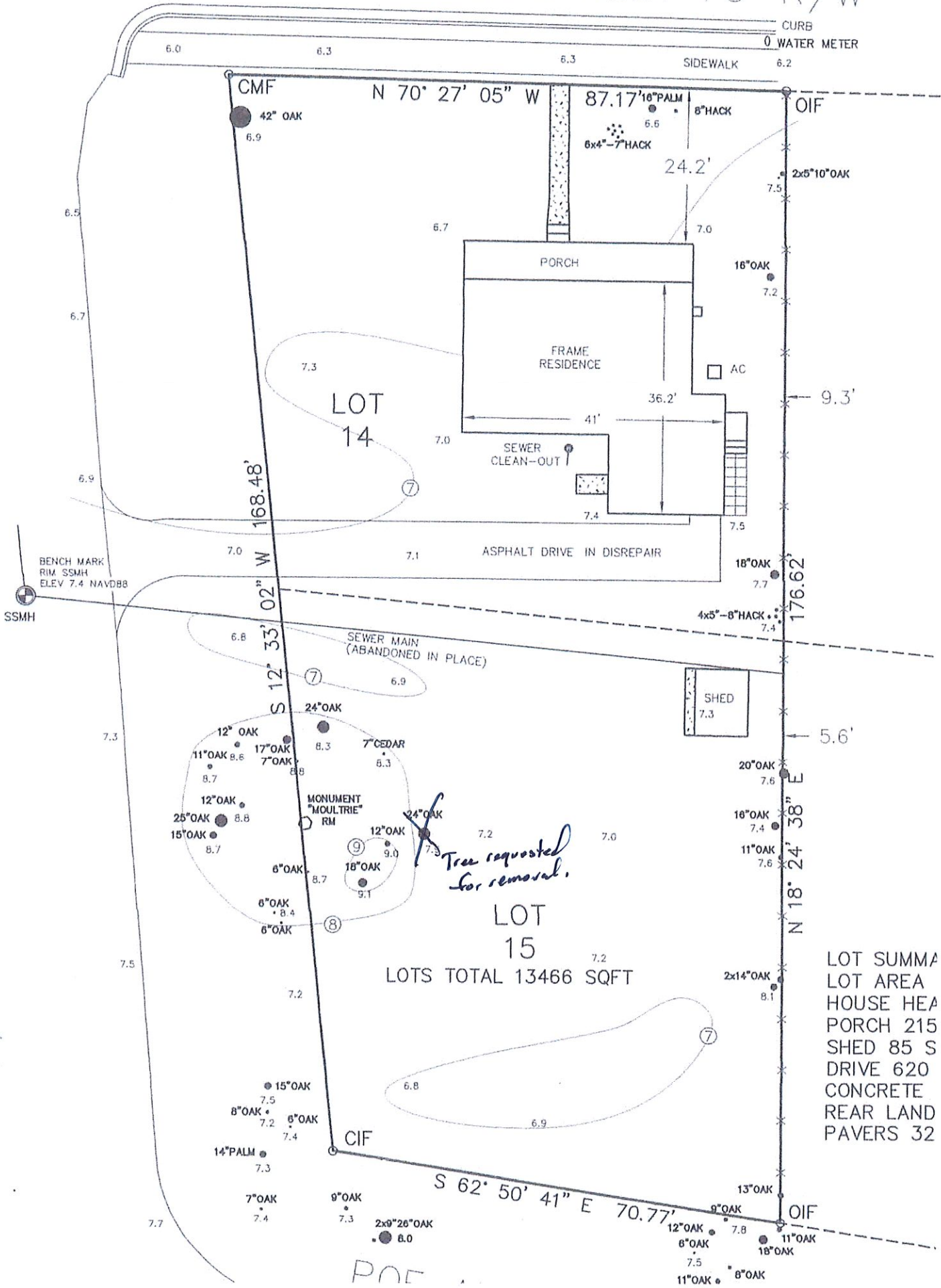
ISA Tree Risk Assessment Qualified

OTHERWISE) AND ARE SUBJECT TO LOCAL ATTRACTION. ANYTHING SHOWN OUTSIDE THE PRESCR
 © DRAWING COPYRIGHT PROTECTED AND IS NOT A LEGAL COPY UNLESS SEALED WITH RAISED IMPRESSION SEAL

MIDDLE STREET 70' R/W

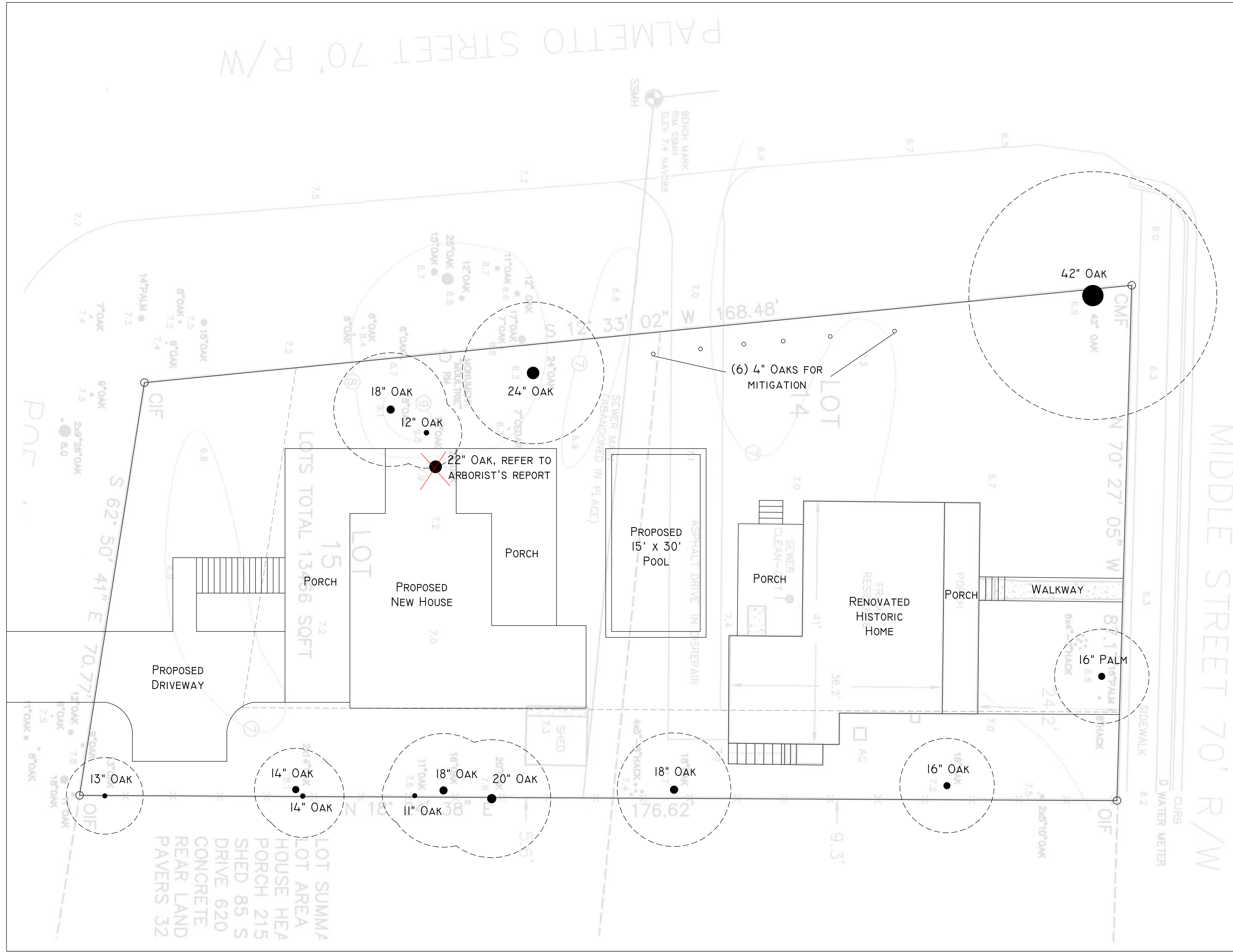
IF THE REFERENCES SHOWN AND DOES NOT CONSTITUTE A TITLE SEARCH. THE BEARINGS SHOWN ARE MAGNETIC (UNLESS STATED

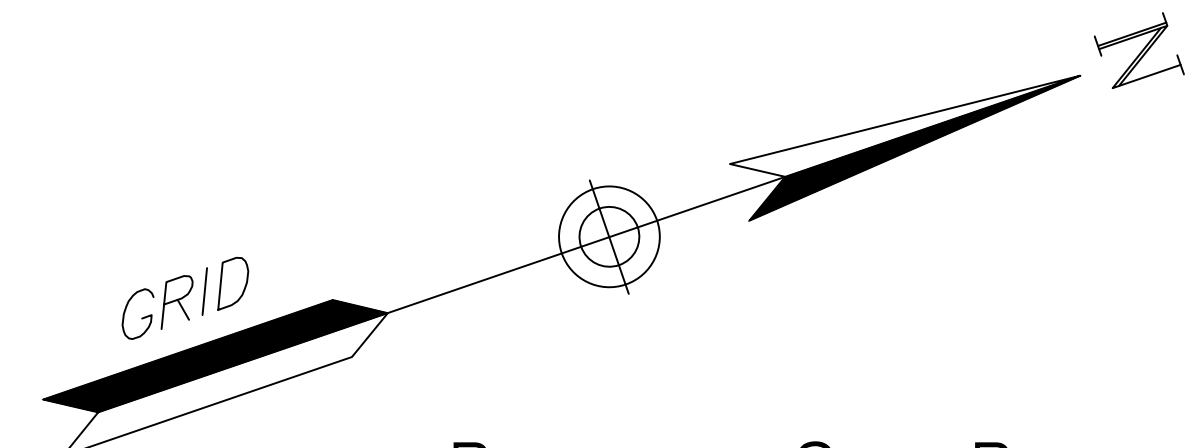
PALMETTO STREET 70' R/W



LOT SUMMA
 LOT AREA
 HOUSE HEA
 PORCH 215
 SHED 85 S
 DRIVE 620
 CONCRETE
 REAR LAND
 PAVERS 32

POE




PROPOSED SITE PLAN
 SCALE: 1/8" = 1'-0"

DRAWINGS AND SPECIFICATIONS ARE THE PROPERTY OF CLARKE DESIGN GROUP, LLC AND SHALL NOT BE COPIED, RE-USED, OR MODIFIED WITHOUT WRITTEN CONSENT